

Squirter® DTI

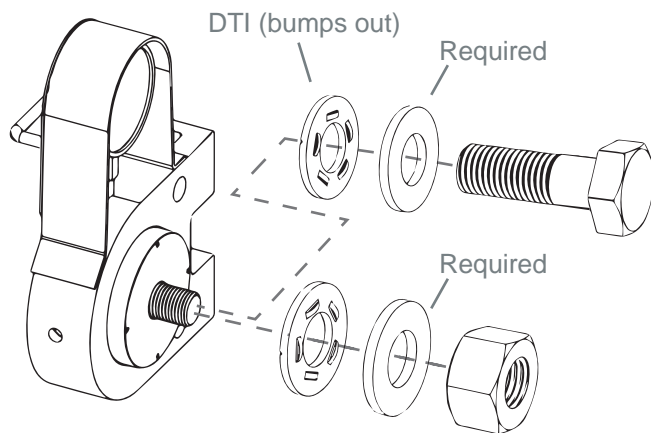
# Tightening Method



applied  
**bolting**  
TECHNOLOGY

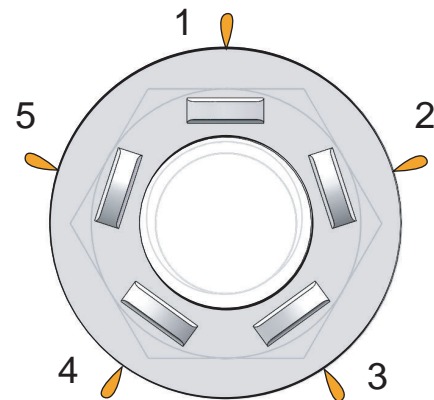
## Testing

### Step 1



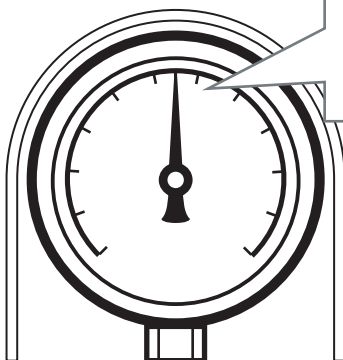
Assemble hardware in a tension calibrator.

### Step 2



Tighten until the Squirter® DTI has orange visible at all bump locations.

### Step 3



**Required  
Tension**

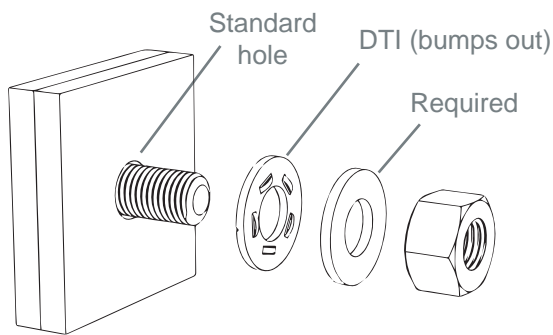
Confirm the tension is at or above the requirement.

Completely flat is acceptable after the bumps are compressed and orange material is visible at all the available squirt media locations on the DTI.

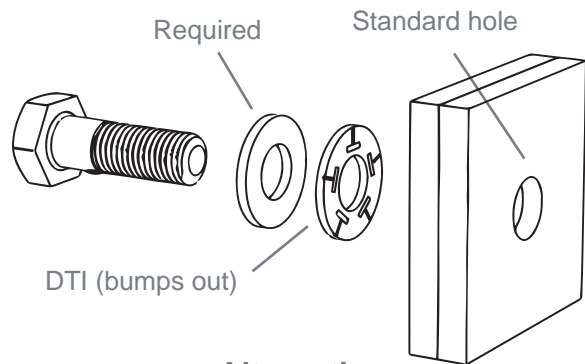
The visual inspection method is now confirmed for use in the steelwork.

# Squirter® DTI Installation and Inspection

## Assemble



**Recommended**

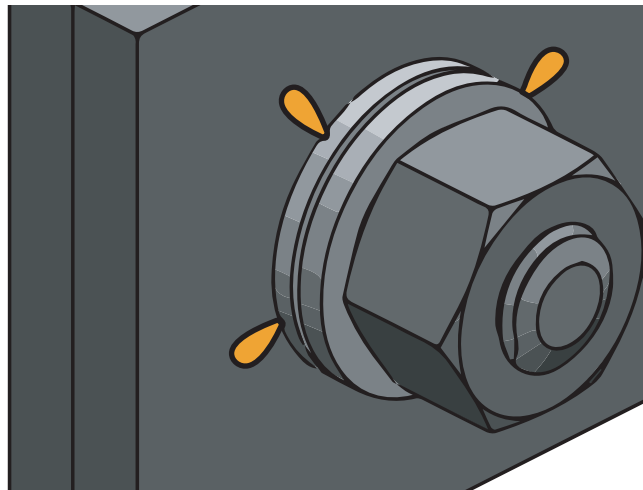


**Alternative**

## Snug

Bring the steelwork together before orange is visible at all bump locations.

## Tighten **Squirter®** DTI



Tighten until the Squirter® DTI has orange visible at all bump locations.

## Inspect

Verify Squirter® DTI has orange visible at all bump locations.

If it's not easy call us! We want you hanging iron.

**(802) 460-3100** or **appliedbolting.com**

Check the website for bolting resources, including test forms.

Videos, and Tips



Scan for support